

New applications of the Solar Greenhouse SOLWA technology

The newly-created company founded by the inventor of the SOLWA solar greenhouse is presently working on the application of the technology to new instruments so as to foster a local development based on renewable energy.

In particular, the SOLWA Company is working on innovative systems for:

- [Drying food](#)
- [Farming and irrigation](#)
- [Drying leachate](#)
- [Drying digestate](#)

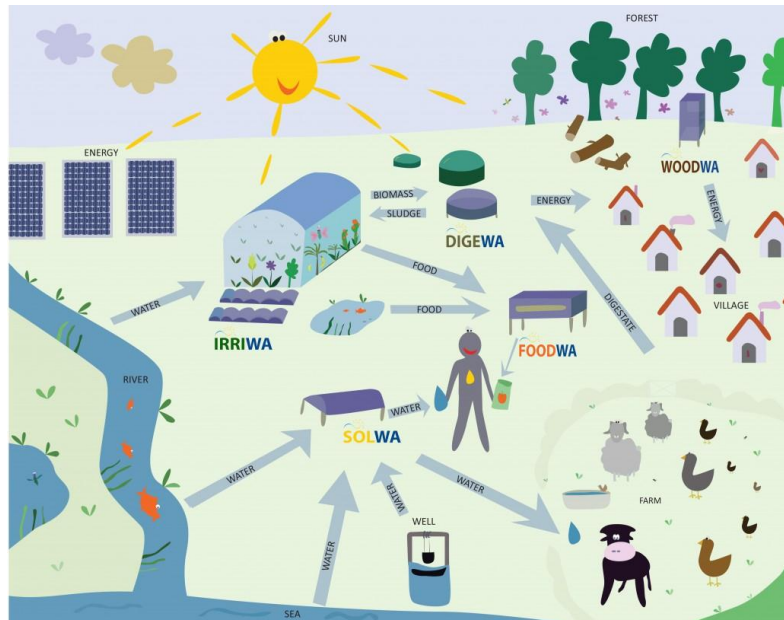
Such a development of the SOLWA Company towards new systems working with solar energy and thus solving in a very innovative way problems linked to production and management of environmental resources, are of great interest and [progresses will be published on the SOLWA website.](#)

The Solar Greenhouse SOLWA is one of the strategic innovations of the IDEASS Veneto Region Catalogue. SOLWA is a solar still designed to treat salty and polluted water. SOLWA's innovation is the specific design of the system that allows solar energy evaporating water at a lower temperature than the usually requested one. The solar greenhouse has power consumption in the order of a few tens of Watts and is powered totally by PV panels.

SOLWA plants fed by solar stills have been promoted and implemented [in different countries](#). In contrast to existing water treatment methods, solar power is the sole source this technology uses: it doesn't need of electricity or fuels or any chemical product. It avoids salt precipitation within the system, thus requiring a very easy maintenance. In addition, the greenhouse can be easily placed in inaccessible and isolated areas, requiring only the presence of sun. In this way, it solves the problem of drinking water lack in areas without traditional sources of energy.

The strength point of SOLWA's technology is:

- no need of external power feed, particularly fossil fuels or electricity;
- reduced maintenance requirements and operating costs close to zero;
- easy management (no need of skilled staff);
- it meets the needs of small/medium isolated communities;
- scalability and modularity of the plants.



To know more

www.solwa.it

[SOLWA Brochure](#)

