

THE CONSTRUCTION AND DEMOLITION WASTE RECYCLING PLANT CIREC IN MEXICO

May 2026

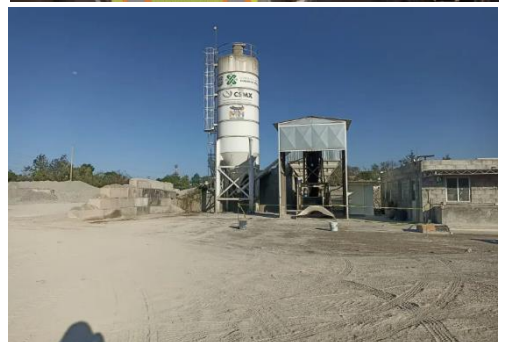
[Concretos Sustentables Mexicanos SA](#) operates one of the first Construction and Demolition Waste (CDW) recycling plants in Latin America. It is currently the only company in Mexico that has the technology to comprehensively manage



all waste generated by the construction industry, regardless of the materials with which it is mixed. [Approved in December 2020, the resolution issued by the Ministry of the Environment initiated the implementation of the CIREC Plant.](#) The Plant is certified by the Mexican Association for the Recycling of Construction and Demolition Waste (AMRCD) and by the [International Recycling Federation \(FIR\).](#)



Concretos Sustentables Mexicanos emerged in 2012 in response to growing environmental awareness and the demand for more sustainable solutions in Mexico's construction sector. The Comprehensive Recycling Center (CIREC) was created as a sustainable alternative for the production of construction materials and to support Mexico City's efforts to separate and reuse as many materials as possible.



[CIREC receives, processes, and recycles waste generated by the construction industry in Mexico City.](#) CIREC's technology allows it to recycle up to 85% of mixed rubble and 100% of clean rubble. It has the capacity to process 1,200 tons of mixed construction waste per day and 250 tons per hour of clean construction waste. In addition, it has a concrete plant capable of producing hydraulic concrete with recycled aggregate for the Mexico City government's sidewalk program.



CIREC collaborates with the private sector to implement comprehensive construction waste management, with the aim of promoting sustainability in the construction industry. CIREC is able to sell sustainable concrete to the City Government or to private entities interested in acquiring more cost-effective materials compared to those distributed by mining companies.

The main materials received by CIREC are wood, stone, and plastics. In addition, it can process vegetable oils as sources of biodiesel, as well as tree, urban, and garden waste.

In particular, the benefits provided by CIREC are the following:

- *Sustainable waste management.* Construction waste represents a significant portion of the total solid waste stream generated in many urban areas. This waste can include materials such as concrete, wood, metal, and plastic, which can have a significant



environmental impact if not managed properly. The recycling plant can help reduce the amount of waste sent to landfills by promoting the reuse and recycling of construction materials.

- *Conservation of natural resources.* The construction and demolition of buildings consumes a large amount of natural resources, such as wood, minerals, and energy. By recycling building materials, the need to extract and process new resources is reduced, which can help conserve natural resources and reduce the ecological footprint of the construction industry.
- *Reduction of greenhouse gas emissions.* The production of virgin construction materials, such as cement and steel, can be energy-intensive and generate significant greenhouse gas emissions. By recycling construction materials, the demand for new materials is reduced, and the emissions associated with their production can be lowered, thus contributing to climate change mitigation.
- *Job creation and local economic development.* Operating a construction waste recycling plant can create jobs in the local community, both in terms of direct labor for plant operation and in related activities such as the collection and transportation of recyclable materials. Furthermore, the development of the recycling industry can foster innovation and economic growth in the circular economy sector.

As mentioned, *Concretos Sustentables Mexicanos* also manages the Bordo Poniente Plant, located in the eastern part of the city, authorized by the Mexico City Asphalt Mixing Plant for the production of warm mix asphalt and microsurfacing. Specialized equipment processes waste, regardless of the materials with which it is mixed, generating recycled aggregates such as sand, gravel, and hydraulic base. Daily laboratory tests are conducted to ensure that these materials are strong, resistant, and durable. [The website provides information on the potential uses of each product.](#) Products include:

[Controlled recycled gravel](#)

[Controlled recycled sand](#)

[Recycled hydraulic base](#)

[Asphalt mix with RAP](#)

[Warm mix asphalt](#)

[Cold mix asphalt](#)

The materials recycled by CIREC are used to build sports fields, asphalt sub-bases, sidewalks, walkways, bike paths, and even to fill disused mines. Fourteen thousand tons of construction debris are produced daily in Mexico City, and the vast majority that is not reused ends up in ravines and rivers. Therefore, it is essential to have the infrastructure and technology to promote a circular economy model that utilizes wasted raw materials and reduces the impact on the ecosystem.

The CIREC recycling plant produces construction materials from waste generated within a radius of approximately 10 kilometers. Its strategic location reduces transportation times for waste and materials, directly and positively impacting the greenhouse gas emissions generated by conventional transport from mines to construction sites and from construction sites to ravines and rivers. In short, it reduces pollution comprehensively.



The CIREC plant is the first of its kind in Mexico, setting a precedent for innovation and sustainability in the country. This could also inspire stakeholders in other countries and contexts to replicate the initiative implemented in Mexico City, contributing to the benefits of society and the environment.

To know more

[CIREC website](#)

[Concretos Sustentables Mexicanos website](#)

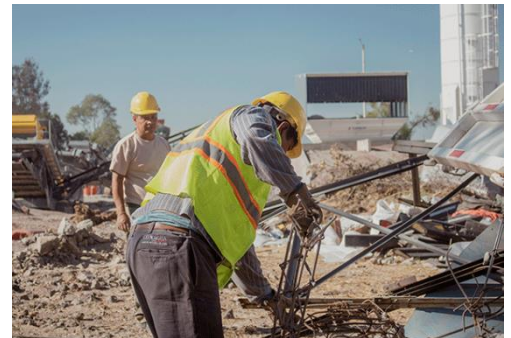
[Planta CIREC Presentacion](#)

[Concretos Sustentables Mexicanos in Facebook.com](#)

[Concretos Sustentables Mexicanos in Instagram.com](#)

[Article in milenio.com](#)

[Article in forbes.com](#)



**LA ECONOMÍA CIRCULAR
YA NO ES OPCIONAL
PARA LA CONSTRUCCIÓN,
ES PARTE DE LA NUEVA
REGLA DEL JUEGO.**

CSMX